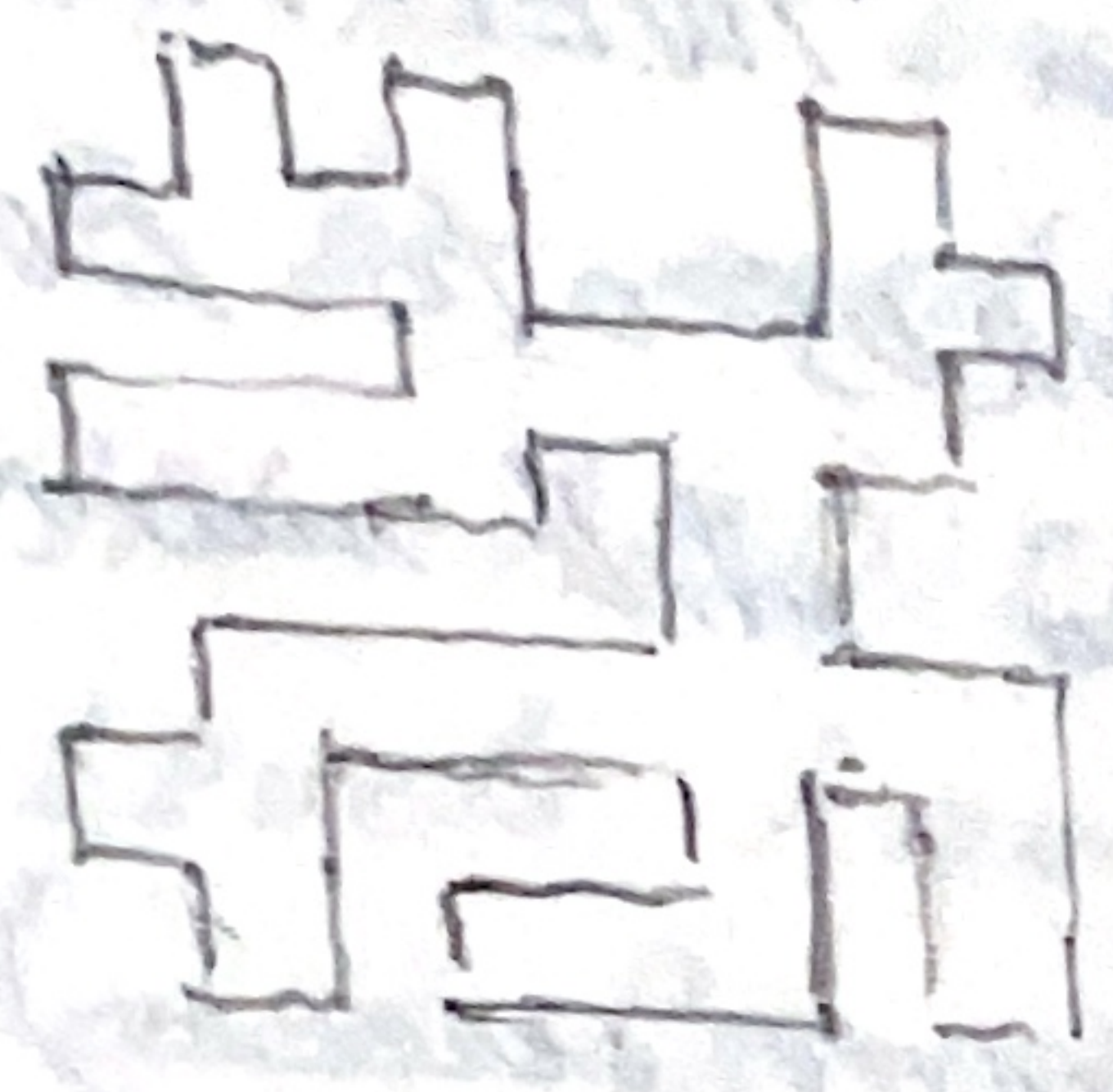


IF SUCCESSFUL your SCORE will be the MINIMUM number of Moves needed compared with the ACTUAL moves you made as a PERCENT AGE, PLUS 0 10 20 or 30 for the level of DIFFICULTY chosen

(A) (F) The MAZE is VERY BIG (4 times this section) & has no EDGES!



A whole NEW MAZE is generated for each adventure (This takes time) The DISTANCE to the TREASURE varies but is never short!

Randomly placed in the maze are ^{sabre} SWORDS, ^{pride} PRISONERS and ^{ou} BOWLS of FOOD, all to HELP you in your search. ^{slightly - red, white, yellow, green, blue} There are also many MAZIACS They are slightly LESS helpful

(A) (H) SWORDS ✂

HAVING a SWORD will enable you to kill a MAZIAC, but after a fight you will need ANOTHER