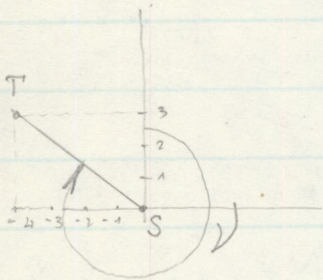


Philips

R → P

$$\boxed{\Delta X} \quad \text{2nd F } \boxed{X \leftrightarrow Y} \quad \boxed{\Delta Y} \quad \text{2nd F } \boxed{R \rightarrow P} \Rightarrow D \quad \text{2nd F } \boxed{X \leftrightarrow Y} \Rightarrow \angle (+360 =) - 53,13$$

(+360 =) 306° 52' 12"



	Y	X
S -	0	0
T -	-4	3

$$Y_T - Y_S = MS \quad X_T - X_S = \text{2nd F } X \leftrightarrow Y \quad MR \quad \text{2nd F } R \rightarrow P \Rightarrow d$$

→ 2nd F X ↔ Y (+360 =) \angle^{dec} 2nd F → (0, 1)

	Y	X
A	400	500
B	250	650

	X	Y	MS
250	250		
-	250	250 -	
400	400	250 -	
$\Delta Y =$	-150	-400	
MS	-150	-400	-150
650	650	-400	
-	650	650 -	
500	500	650 -	
$\Delta X =$	150	-500	
2nd F } X ↔ Y	500	150	
MR	-150	150	
2nd F } R → P	<u>212,13</u>	-45	
2nd F } X ↔ Y	-45	213,13	
+	-45	-45 +	
360	360	-45 +	
=	315	+360	